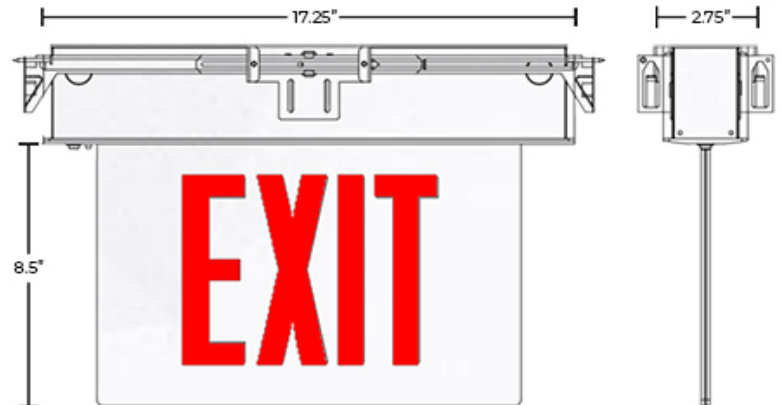


Model: CHELR-R



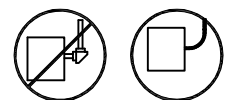
IMPORTANT SAFEGUARDS

**WHEN USING ELECTRICAL EQUIPMENT,
BASIC SAFETY PRECAUTIONS SHOULD BE FOLLOWED INCLUDING THE FOLLOWING:**

- Installation is to be performed only by qualified personnel.
- All electrical connections must be in accordance with local codes and ordinances.
- Turn off electrical power and allow the unit to cool off before opening for maintenance or servicing.
- Suitable for damp locations. Do not use outdoors.
- Do not let power supply cords touch hot surfaces.
- Do not use in hazardous location or mount near gas or electric heaters.
- Use caution when servicing batteries. Battery acid can cause burns to skin and eyes. If acid is spilled on skin or in eyes, flush acid with fresh water and contact a physician immediately.
- Equipment should be mounted in location and at heights where it will not readily be subject to tampering by unauthorized personnel.
- The use of accessory equipment is not recommended by the manufacturer and may cause unsafe conditions.
- After installation, allow battery to recharge for 24 hours before the first full duration discharging test.
- Do not use this equipment for other than its intended use.
- All servicing should be performed by qualified personnel only.

WIRING DIAGRAM

Use Flexible Conduit Only



AC Wiring

Connect the white wire to the neutral lead.
Connect the black wire to the hot lead.

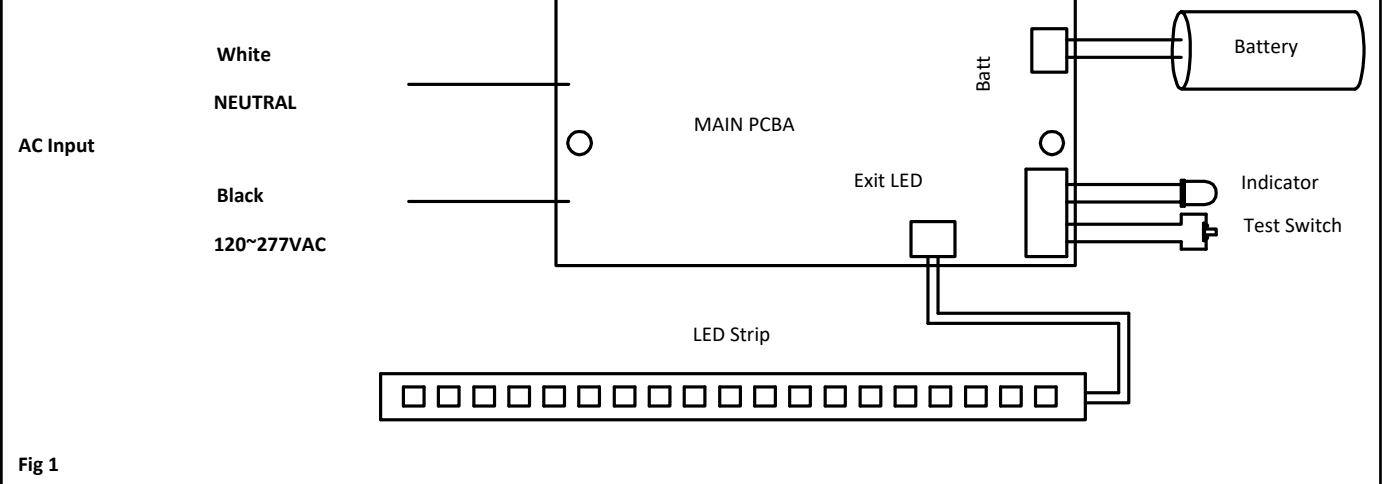


Fig 1

INSTALLATION INSTRUCTIONS

RECESSED, CEILING & WALL MOUNT

NOTICE: WEAR GLOVES

1. Install recessed kits between joists. Position recessed kits temporarily by hammering "nail-in" tabs on bar hangers, then secure permanently with nails or screws. Bar hangers should be level with bottom of joists . Adjust height of recessed kits vertically using adjusting slots and then tightening all screws on adjusting slots and bar hanger bracket to secure adjusting bracket and bar hangers. (see Fig 2)
2. Separate trim plate, connect battery connector as shown in wiring diagram. (see Fig 3)
3. Hang safety cable from the module clip (see Fig 4)
4. Remove J-Box Cover, Route the wires into the J-Box.
5. Make electrical connections according to wiring diagram. (see Fig 1)
6. Push excess wire into J-Box, install J-Box cover.
7. Assemble trim plate back using M3-15mm screws. (see Fig 5)
8. Connect light bar connector, assemble panel module to trim plate.

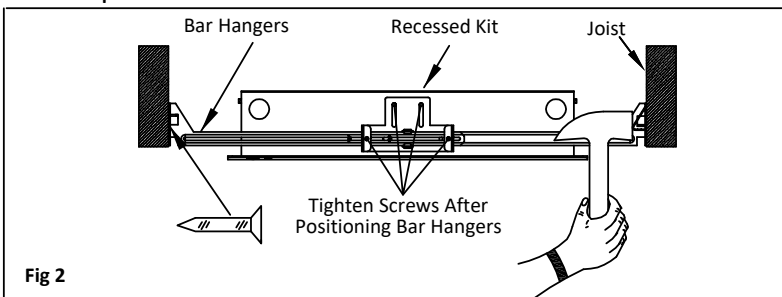


Fig 2

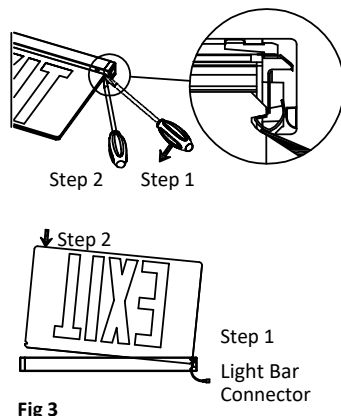


Fig 3

Disassemble (Double Face) Panel

Using a flat screw driver, insert into the gap between the panel and clip. Press the spring to release and remove the panel.

Assemble (Single Face) Panel

Make sure the single face panel EXIT letter direction is correct as seen in the figure to the left. First, align panel to the spring-side first, push the other side of the panel into the slot to secure in place.

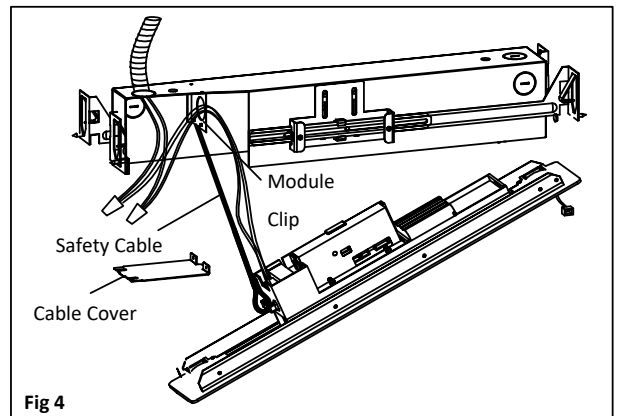


Fig 4

Recessed Wall Mount

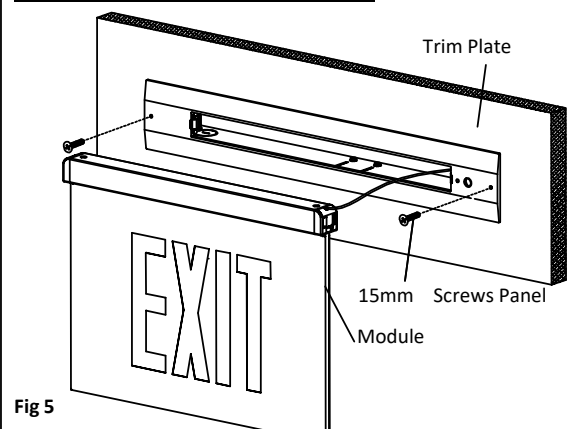


Fig 5

Recessed Ceiling Mount

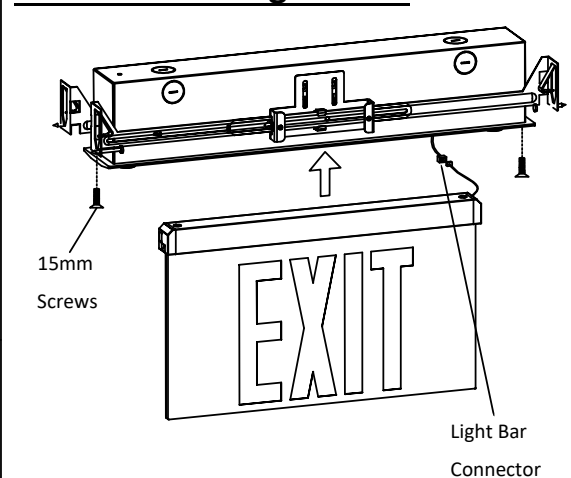


Fig 6