

## IMPORTANT SAFETY INSTRUCTIONS

**WARNING:** Risk of electrical shock. Disconnect power at the circuit breaker or fuse before installation or servicing.

**CAUTION:** Installation must be performed by a qualified electrician in accordance with the National Electrical Code (NEC) and all applicable local codes.

Do not use outdoors unless the fixture is specifically rated for wet locations.

## INSTALLATION INSTRUCTIONS

1. Open the accessories bag and assemble the following components:

- Long pillar assembly
- Long button assembly
- Short button assembly (See Fig. 1)

2. Remove the clear cover from the waterproof housing.

3. Using approved tools, remove the required knockouts for conduit or cable entry and fixture mounting. Install the long pillar assembly, long button assembly, and short button assembly onto the housing. (See Fig. 2)

4. Secure the waterproof housing to the junction box (J-box) using appropriate fasteners. Route the branch circuit conductors into the housing in accordance with NEC requirements.

## UNPACKING AND INSPECTION

Carefully open the carton and verify all components are present and undamaged:

- (1) Waterproof housing
- (1) Accessories bag

If any components are missing or damaged, do not install the fixture.

5. Remove the EXIT sign panel. Remove the backplate center knockout and the two mounting knockouts. Route the AC supply conductors into the EXIT sign enclosure.

6. Mount the EXIT sign onto the two pillar assemblies of the waterproof housing using the supplied screws.

7. Make all electrical connections in accordance with the wiring diagram provided with the EXIT sign. Ensure proper connection of the AC supply, equipment grounding conductor, and battery leads. (See Fig. 3)

8. Neatly arrange and push all excess wiring back into the junction box to prevent pinching or damage.

9. Reinstall the EXIT sign panel and secure the clear cover to the waterproof housing using the four supplied screws.

Fig.1

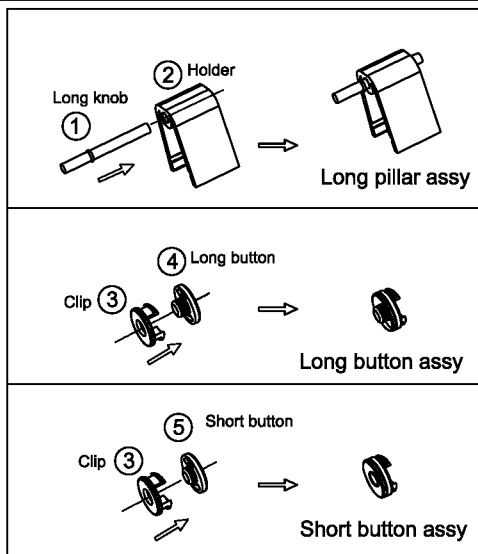
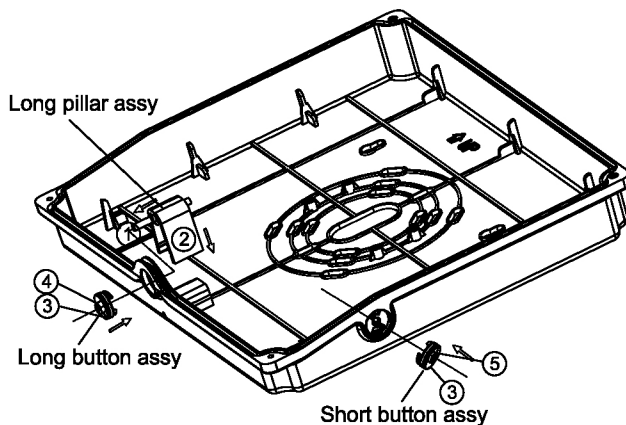


Fig.2



Press long pillar assy down and snap on the housing.  
Press long button assy and snap on bottom of housing.  
Press short button assy and snap on side of housing.

Fig.3

